

Effect of the average scalar curvature on Riemannian manifolds

Kwok-Kun Kwong
Australian National University



Reference: Effect of the average scalar curvature on Riemannian manifolds
[arXiv:2209.00237](https://arxiv.org/abs/2209.00237)

Notation: (N^n, g) (complete) Riem mfd

average $\left\{ \begin{array}{l} \text{Ricci curvature (Ric)} \\ \text{Scalar curvature } R \end{array} \right.$

$R_{ij} = \text{sectional curv.} = \langle (\nabla_i \nabla_j - \nabla_j \nabla_i) \partial_k, \partial_k \rangle$ **strongest**

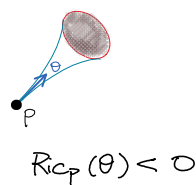
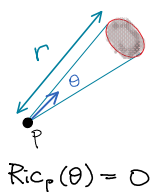
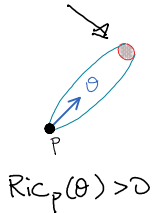
$R_{ij} = \sum_{k,l} g^{kl} R_{kijl}$

$R = \text{tr}_g(\text{Ric}) = \sum_{i,j} g^{ij} R_{ij}$ **weakest**

Main Theme: Roughly, large "curvature" \Rightarrow small "size"

• Geometric meaning of Ric

$$\text{Area} = c r^{n-1} \left(1 - \frac{\text{Ric}_p(\theta)}{3} r^2 + O(r^4) \right) \quad \text{as } r \rightarrow 0$$

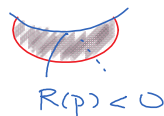
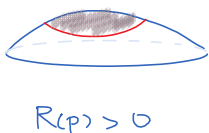


• Geometric meaning of R

$$|B_r(p)| = b_n r^n \left(1 - \frac{R(p)}{6(n+2)} r^2 + O(r^4) \right) \quad \text{as } r \rightarrow 0$$

Euclid.

(can be taken as def. of $R(p)$)



• R tends to oppose $|B_p(r)|$ for small r .

ie. $R(p) > 0 \Rightarrow |B_r(p)| < b_n r^n$, r small

• On the other hand,

$$R(p) \geq 0 \not\Rightarrow |B_r(p)| \leq b_n r^n$$

Counter-example

eg. $M = S^2 \times \mathbb{H}^2 \quad \therefore R \equiv 0$

Gray's formula

$$\Rightarrow |B_r(p)| = b_4 r^4 \left(1 + \frac{1}{360 \cdot 4 \cdot 6 \cdot 8} (-3|\text{Rm}|^2 + 8|\text{Ric}|^2) r^4 + O(r^6) \right).$$

$$= b_4 r^4 \left(1 + \frac{1}{72 \cdot 6 \cdot 8} r^4 + O(r^6) \right) > b_4 r^4$$

↑ close to, but still >

Cor: $R \geq 0$ alone is not enough to say something on $|B_r(p)|$, even for small r

• Also, for $n \geq 3$, upper bdd of R is not useful to deduce something topological or geometrical:

\forall mfd $N^{n \geq 3}$ has comp. metric g s.t. $\text{Ric}_g < 0$ (Lohkamp 1994)
(cf also Aubin 1970)

• From Gromov's "Four Lectures on Scalar Curvature"

But this is an illusion:

there is no single known (are there unknown?) geometric argument, which would make use of this definition.

The immediate reason for this is the infinitesimal nature of the volume comparison property: it doesn't integrate to the corresponding property of balls of specified, let them be small, radii $r \leq \epsilon > 0$.

$$R(p) = \lim_{r \rightarrow 0} \frac{b_n r^n - |B_r(p)|}{C_n r^{n+2}}$$

Basic Question. Does the sign of the scalar curvature have any visible macroscopic effect on the geometry of V ? (Say $R \geq k$)

• Situation is quite different for Ric

Bishop-Gromov volume (element) comparison

If $\text{Ric} \geq (n-1)k$

Let $dV = \underbrace{F(r, \theta)}_{\text{Volume element / Jacobian}} dr d\theta$

polar coord

$$\Rightarrow F(r, \theta) \leq F_k(r) = \begin{cases} r^{n-1} & k=0 \\ \sin^{n-1} r & k=1 \\ \sinh^{n-1} r & k=-1 \end{cases}$$

integrate $\Rightarrow |B_r(p)| \leq |B_k^n(r)|$

space form

• Q: Say $\text{Ric} \geq 0$ & $R \geq c > 0$, can we improve

Bishop - Gromov ?

eg. $|B_r(p)| \leq b_n r^n$ - something ?

(I don't know.)

• Gromov conjecture (1986). (N^n, g) complete non-cpt.

$$\text{Ric} \geq 0, R \geq n(n-1) \Rightarrow |B_r(p)| \leq C_n r^{n-2}$$

(True under additional "non-collapsing" ass. (B. Zhu 2022))

• But surprisingly, even average \bar{R} can say something about the "size":

Thm (Green, independently by Berger)

$$(N^n, g) \text{ closed}, \bar{R} \geq n(n-1)$$

$$\Rightarrow \text{Conjugate radius } \text{conj}(N) \leq \pi$$

$$\left(\begin{array}{l} \text{conj}(N) := \inf_{p \in N} \text{conj}(p) \ \& \\ \text{conj}(p) := \sup \{ r : d \exp_p|_V \text{ non-degenerate if } |V| < r \} \end{array} \right)$$

Significance: even \bar{R} can say something "global"!

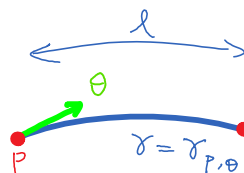
Key idea: Index lem + Liouville Thm

PF of Green's Thm

$$l := \text{conj}(N)$$

Choose $X_i := \sin\left(\frac{\pi t}{l}\right) e_i$ along γ ($1 \leq i \leq n-1$)

parallel, onf



• Index lem:

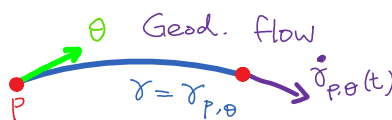
$$0 \leq I(X_i, X_i) := \int_0^l |\dot{X}_i|^2 - \text{Ric}(\dot{\gamma}, X_i, X_i, \dot{\gamma}) dt \leftarrow \begin{array}{l} \text{Index form} \\ \text{(2nd var. of } \int \delta^2) \end{array}$$

$$\stackrel{\text{sum}}{\Rightarrow} 0 \leq (n-1) \frac{\pi^2}{2l} - \int_0^l \text{Ric}(\dot{\gamma}(t)) \sin^2\left(\frac{\pi t}{l}\right) dt \quad (\text{as in Bonnet Myers})$$

Trick: Integrate over $(p, \theta) \in SN$

$$0 \leq (n-1) \frac{\pi^2}{2l} \omega_{n-1} |N| - \int_{SN} \int_0^l \text{Ric}(\dot{\gamma}_{p, \theta}(t)) \sin^2\left(\frac{\pi t}{l}\right) dt d\mu_{SN}(p, \theta)$$

• Interchange \int_{SN} & \int_0^l



& geod. flow $\theta \mapsto \dot{\gamma}_{p, \theta}(t): SN \rightarrow SN$ preserves $d\mu_{SN}$ (Liouville Thm)

$$\therefore (n-1) \frac{\pi^2}{2l} \omega_{n-1} |N| \geq \int_0^l \sin^2\left(\frac{\pi t}{l}\right) \int_{SN} \text{Ric}(\dot{\gamma}_{p, \theta}(t)) d\mu_{SN}(p, \theta) dt$$

$$\begin{aligned}
\therefore (n-1) \frac{\pi^2}{2l} \omega_{n-1} / |N| &\geq \int_0^l \sin^2\left(\frac{\pi t}{l}\right) \int_{S^N} \text{Ric}(\tilde{\gamma}_{p,\theta}(t)) d\mu_{S^N}(p,\theta) dt \\
&\stackrel{\text{Liouville}}{=} \int_0^l \sin^2\left(\frac{\pi t}{l}\right) \int_{S^N} \text{Ric}_p(\theta) d\mu_{S^N} dt \\
&= \frac{l}{2} \int_{p \in N} \int_{S_p N} \text{Ric}_p(\theta) d\theta d\mu_N \\
&= \frac{l}{2} \int_N \frac{\omega_{n-1}}{n} R(p) d\mu_N \\
&\geq (n-1) \frac{l}{2} \omega_{n-1} / |N| \quad \text{ie. } l \leq \pi
\end{aligned}$$

#

- In view of Green Thm, can \bar{R} deduce something about geom. of geod. spheres / balls?

Thm 1 (K. 2022) ($k=0$ case)

(N^n, g) closed, $0 \leq \text{Ric} \leq \kappa$

\Rightarrow Average vol. of balls

$$\bar{V}(r) \leq b_n r^n - \frac{b_n \bar{R}}{\kappa} \int_0^r (1 - e^{-\frac{\kappa t^2}{6}}) t^{n-1} dt$$

Equality \Leftrightarrow N is flat & $r \leq \text{inj}(N)$

- Similar result if $0 \leq \text{Ric}_\kappa := \text{Ric} - (n-1)kg \leq \kappa$ as well, which leads to

Cor $0 \leq \text{Ric}_\kappa \leq \kappa$ ($k=1$ case)

$$\Rightarrow |N| \leq |S^n| - b_n \frac{\bar{R}_\kappa}{\kappa} \int_0^\pi (1 - e^{-\kappa \sigma_1(t)}) \sin^{n-1} t dt$$

(sharp $\Leftrightarrow N = S^n$)

- Ingredients of Thm 1

- ① Jacobian estimate
- ② "Reverse" Jensen ineq
- ③ Liouville Thm

- ① Jac. est ($k=0$ case)

In polar coord around p , (within $\text{inj}(p)$)

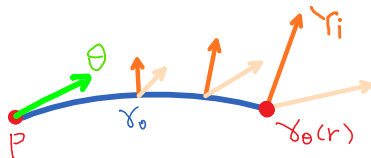
$$dV = F(p, r, \theta) dr d\theta$$

$\xrightarrow{S_p N \cong S^{n-1}}$

$$\Rightarrow F(p, r, \theta) \leq \exp\left[-\int_0^r \int_0^\tau \frac{t^2}{\tau^2} \text{Ric}(\dot{\gamma}_{p, \theta}(t)) dt d\tau\right] r^{n-1} \quad (\text{no ass. on Ric!})$$

• Pf of Jac. est

(i) Fix r & $\theta \in S_p N$



$e_1, \dots, e_n = \gamma_0'$ parallel along γ_0

$\gamma_i(t)$ ($i=1, \dots, n-1=m$) Jacobi field st

$$\begin{cases} \gamma_i(0) = 0 \\ \gamma_i(r) = e_i(r) \end{cases} \Rightarrow F(p, r, \theta) = \frac{\det(\gamma_1(t), \dots, \gamma_m(t))}{\det(\dot{\gamma}_1(0), \dots, \dot{\gamma}_m(0))}$$

(ii) Differentiate $\log F$

$$\begin{aligned} \frac{\partial}{\partial r} \log F(p, r, \theta) &= \sum \int_0^r \langle \dot{\gamma}_i, \dot{\gamma}_i \rangle - \langle Rm(\gamma_i, \dot{\gamma}) \dot{\gamma}, \gamma_i \rangle dt \\ &= \sum I(\gamma_i) \quad \leftarrow \text{index form} \end{aligned}$$

(iii) Compare standard Jacobi field

Index lemma: $X(0) = Y(0)$ & $X(r) = Y(r)$

$\xrightarrow{\text{Jac field}}$

$$\Rightarrow I(Y) \leq I(X)$$

Choose $X_i(t) := \frac{t}{r} e_i(t)$

$$\sum I(X_i) \xrightarrow[\text{compute}]{\text{direct}} - \int_0^r \frac{t^2}{r^2} \text{Ric}(\dot{\gamma}(t)) dt + \frac{d}{dr} (\log r^{n-1})$$

ie. $\frac{\partial}{\partial r} \log F(p, r, \theta) \leq \frac{d}{dr} (\log r^{n-1}) - \int_0^r \frac{t^2}{r^2} \text{Ric}(\dot{\gamma}(t)) dt \quad \leftarrow (*)$

• Integrating (*) wrt r & taking exp,

$$F(p, r, \theta) \leq \exp\left[-\int_0^r \int_0^\tau \frac{t^2}{\tau^2} \text{Ric}(\dot{\gamma}_{p, \theta}(t)) dt d\tau\right] r^{n-1}$$

- Next, want to integrate this ineq over $(p, \theta) \in SN$ apply Liouville Thm (Green's trick)

Problem: integrand is $\exp\left[\int \dots Ric(\dots)\right]$ instead of $\int \dots Ric(\dots)$

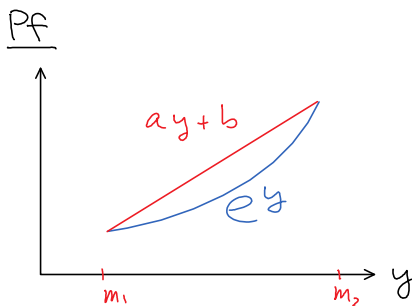
Our sol: ② Reverse Jensen ineq

Lem On probability space (Ω, μ)

if $m_1 \leq f \leq m_2$

$$\Rightarrow \int_{\Omega} e^f d\mu \leq a \int_{\Omega} f d\mu + b$$

where $a = \frac{e^{m_2} - e^{m_1}}{m_2 - m_1}$, $b = \frac{m_2 e^{m_1} - m_1 e^{m_2}}{m_2 - m_1}$



Convexity

$$\Rightarrow e^y \leq ay + b \quad (m_1 \leq y \leq m_2)$$

\Rightarrow Integrate!

③ Take $\Omega = (SN, \frac{d\mu_{SN}}{|\mathbb{N}| \omega_{n-1}})$.

$$f = Ric(p, \theta) \cdot SN \rightarrow \mathbb{R}$$

Ass $0 \leq Ric \leq \kappa$

Recall: $F(p, r, \theta) \leq \exp\left[-\int_0^r \int_0^\tau \frac{t^2}{\tau^2} Ric(\dot{\gamma}_{p, \theta}(t)) dt d\tau\right] r^{n-1}$ by ①

- Integrate over $(p, \theta) \in SN$ wrt prob. meas.

$$\begin{aligned} \bar{A}(r) &= \left(1 - a \int_0^r \int_0^\tau \frac{t^2}{\tau^2} \int_{SN} Ric(\dot{\gamma}_{p, \theta}(t)) d\mu_{SN} dt d\tau\right) r^{n-1} \\ &= \left(1 - \frac{1 - e^{-\kappa r^2/6}}{n \kappa} \bar{R}\right) \omega_{n-1} r^{n-1} \end{aligned}$$

\bar{R} by Liouville

↗ average area

- Integrating again

$$\bar{V}(r) \leq b_n r^n - \frac{b_n \bar{R}}{\kappa} \int_0^r (1 - e^{-\frac{\kappa t^2}{6}}) t^{n-1} dt$$

(true also for metric balls of any radius by using cutoff.)

Effect on average mean curvature of geod spheres

• Integrating (*):

$$\frac{\partial}{\partial r} \log F(p, r, \theta) \leq \frac{d}{dr} (\log r^{n-1}) - \int_0^r \frac{t^2}{r^2} \text{Ric}(\dot{\gamma}(t)) dt$$

over $(p, \theta) \in S_N$ & using Green's trick,

$$\Rightarrow \frac{d}{dr} \int_{S_N} \log \left(\frac{F(p, r, \theta)}{r^{n-1}} \right) d\mu_{S_N}(p, \theta) \stackrel{(**)}{\leq} - \frac{\bar{R} r}{3n} \quad \text{(monotone quantity if } \bar{R} \geq 0 \text{)}$$

Note that there's no curvature ass. (except $r < \text{inj}(N)$)

• (***) can be reinterpreted as

Thm 2 For closed (N, g) , if $r < \text{inj}(N)$

$$\Rightarrow \int_{S_N} H(p, r, \theta) d\mu_{S_N}(p, \theta) \leq \frac{n-1}{r} - \frac{\bar{R} r}{3n}$$

more generally,

$$\int_{S_N} H(p, r, \theta) d\mu_{S_N}(p, \theta) \leq \frac{F_k'(r)}{F_k(r)} - \frac{\bar{R}_k}{n} \phi_k(r)$$

mc of $S_r(p)$ at $\text{exp}_p(r\theta)$

av. of $R - n(n-1)k$

explicit

• This is surprising to me: [Gray - Vanhecke]

$$\int_{S^{n-1}} H(p, r, \theta) d\theta = \frac{n-1}{r} - \frac{R(p)}{3n} r - \frac{1}{90n(n+2)} (3\|\text{Rm}\|_p^2 + 2\|\text{Ric}\|_p^2 + 18\Delta R(p)) r^3 + O(r^5),$$

v. complicated

for small r

Thm 3 (Eigenvalue est.)

(N^n, g) closed, $\text{Ric}_k \geq 0$, $\text{Rm} \leq K$, $r < \min\{\text{inj}(N), \text{inj}(N_k)\}$

space form

$$\Rightarrow \min_{p \in N} \lambda_1(B_p(r)) \leq \lambda_1(B_k(r)) - \frac{\bar{R}_k}{n} \frac{\int_0^r \phi(\tau) |\phi'(\tau)| F_k(\tau) \psi_k(\tau) d\tau}{\int_{B(p,r)} \phi(d(p,x))^2 d\mu_N(x) d\mu_N(p)}$$

ball in N_k

1st Lap. eigenvalue wrt. Dirichlet cond.

"=" N has curv. k .

• This improves Cheng's eigenvalue est.

Questions:

- What does monotonicity (*) mean/imply? (Is it known?)
- How about non-compact (N, g)
(Some results abt. vol./area can be extended to
 $|N| < \infty$ & $\int_{SN} Ric^- < \infty$)
- Other settings? (with boundary, Kahler, Lorentzian ...)



Thank You!